

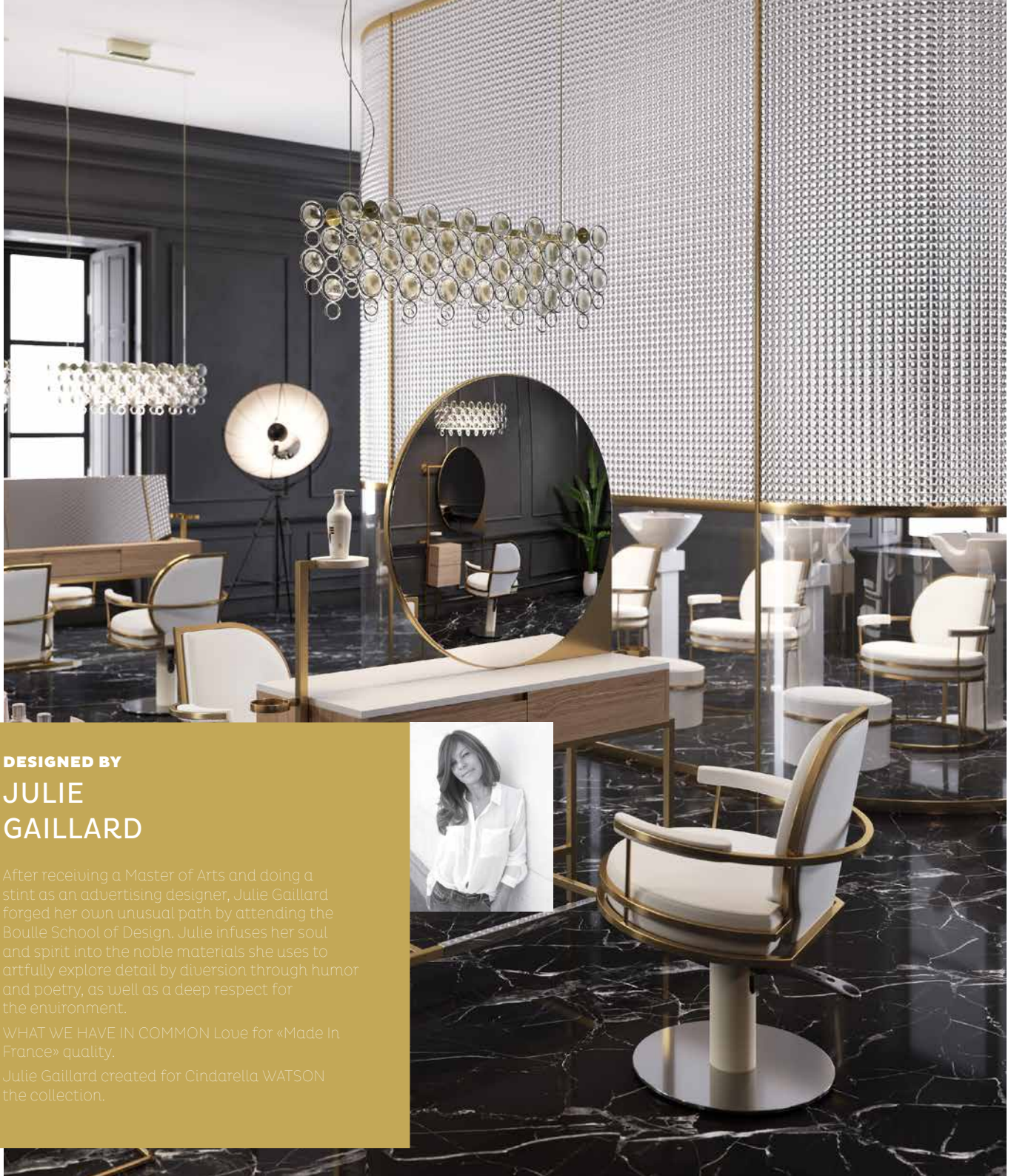


GHARLENI

HAIR AND BEAUTY SALON FURNITURE

In partnership with

Cindarella
PARIS



DESIGNED BY

JULIE GAILLARD

After receiving a Master of Arts and doing a stint as an advertising designer, Julie Gaillard forged her own unusual path by attending the Boulle School of Design. Julie infuses her soul and spirit into the noble materials she uses to artfully explore detail by diversion through humor and poetry, as well as a deep respect for the environment.

WHAT WE HAVE IN COMMON Love for «Made in France» quality.

Julie Gaillard created for Cindarella WATSON the collection.



WATSON



«The Watson collection is built around a set of basic graphic lines and geometrical shapes, for warm and sleek configuration but also to promote simple and versatile uses.

I decided to combine quality materials such as wood and metal with pieces of Corian® to produce a certain visual warmth and furniture that is pleasing to the touch. The different shades – gold, white, black or pastel – create an inviting and intimate atmosphere. This, I believe, is what we seek when we decide to pamper ourselves.

What's important for me is to design furniture that makes the space beautiful and enhances the customer's moment of relaxation, which is always precious.»





DESIGNED BY
NATHALIE
HACKER

Art director, passionate about materials, color, and light. Nathalie Hacker craves objects and the emotions they convey.

WHAT WE HAVE IN COMMON: Stunning materials and a profound passion for expertise and craftsmanship.

The **MADemoiselle** Collection, by Nathalie Hacker created for Cindarella.





The alliance of elegance and practicality were the guiding principles of the new Mademoiselle furniture line. Its gentle curves are designed to make you feel as though ensconced in a delicate casing, enriched by a selection of shades and materials.

The finesse of the design and of every minute detail – from the bevelled edges and the handles to the floor space used and the dimensions – were all closely examined by our designer, making the Mademoiselle Line an elegant and timeless collection of salon furniture.



MADemoiselle



DESIGNED BY

STUDIO RUALDEPAPAVERO

Director of Ruadelpapavero Creative Studio, Matteo Neroni explores industrial design, interior design and graphic arts. He is always on the lookout for new materials and technologies: a style of design that combines traditional materials with technology. OUR COMMON GROUND: To propose creations that generate emotion while being rooted in modern architecture. Matteo Neroni designed in collaboration with Cindarella designers the PHILOSOPHY collection.





PHILOSOPHY



A new timeless, modern lines that invite to relaxation. The Philosophy collection has been designed as a must: new wash units with right combination of comfort and technology, a modern and elegant chair with wood option. An aesthetic, modular furniture that registered your salon in a modern spirit.



CINDARELLA

Styling chairs



WATSON

Design chair, created by Julie GAILLARD, a design featuring neoclassical lines blending harmoniously with modern geometrical shapes. Structure made of steel, beech plywood seat clad in Bultex foam. Steel epoxy seat structure black/white/gold/powdery pink. Selection of fabrics from the CINDARELLA range.

67 x 67 x 91 cm



MADemoISELLE,

the eponymous styling chair of the collection, design by Nathalie HACKER. Harmonious lines of refined elegance, sleek shapes of a cosy space which will highlight the visual identity of your bespoke salon decoration. Injected foam chair, simple topstitching, matching shades or contrast stitching. Selection of fabrics from the CINDARELLA upholstery range.

67 x 61 x 89 cm



PHILOSOPHY

Timeless Design, styling chair, contemporary lines, design by Mattéo NERRONI. A perfect blend of geometry and comfort inviting to relaxation. That collection can be integrated into industrial-looking spaces as well as in settings where a blend of materials contributes to bespoke harmony. The seat structure is made of beech plywood clad in Bultex foam. Simple topstitching, matching shades.

62 x 64 x 91 cm

CINDARELLA

Backwash Units

WATSON

A design featuring neoclassical lines blending harmoniously with modern geometrical shapes. Rear casing made of black or white epoxy, deep white ceramic titling bowl, fitted with MC3 mixer tap. Steel structure, fixed seat and backseat. Seat steel structure colors epoxy black/white/gold/powdery pink.

67 x 111 x 98 cm



MADemoiselle

Harmoniously lines of refined elegance, sleek shapes of a cosy space which will highlight the visual identity of your bespoke salon decoration. 4 upholstery finish versions available, simple topstitching, braided rim, upholstery buttons, and Swarovski strass Black or white rear casing Deep white ceramic reclining shampoo bowl with MC3 mixer tap and Aquastop KIT.

70 x 125 x 91 cm



PHILOSOPHY,

contemporary and appealing lines.

A CINDARELLA creation for hair stylists well-being. A perfect blend of geometry and comfort, inviting to relaxation. That collection can be integrated to industrial-looking spaces as well as in settings where a blend of materials contributes to bespoke harmony. Enhance your setting with wood finish on the external edges of the armrests. Backwash unit with black or white epoxy steel casing.

70 x 153 x 90 cm

BEST OF CINDARELLA

MANON

styling chair, from sleek design to comfort. Plexiglas seat. Bultex foam cushion, Simple topstitching, matching shades or contrast stitching. Removable cover by upholsterer. CUSHION: Selection of fabrics from the upholstery range in CINDARELLA catalogue. PLEXIGLAS COLORS: smoky grey, opaque black, opaque white, antique pink, brown
66 x 59 x 93 cm



EMMA

Plexiglas styling chair with cosy and light design. Bultex foam cushion, Simple topstitching, matching shades or contrast stitching, removable cover by upholsterer. CUSHION: Selection of fabrics from upholstery range in CINDARELLA catalogue. PLEXIGLAS COLORS: smoky grey, opaque black, opaque white, antique pink, brown
60 x 66 x 87 cm



EXTENSO backwash unit with comfort bucket seat. Fixed seat, chrome-plated armrests. Available in 3 versions - Galvanized frame. Black or grey plastic laminate casing White deep ceramic tilting bowl. MC3 mixer tap. Beech plywood seat structure clad in Bultex foam, simple topstitching, matching shades or contrast stitching, Removable cover by upholster. Fire retardant wood foam and fabric. Selection of fabrics from the upholstery range in CINDARELLA catalogue
64 x 139 x 96 cm (lifted legrest)



COCOON PREMIUM BALL not available in USA Scalable design with removable cushion for the lumbar region comfort, Comfortable seat with horizontal topstitching. Round-shape station which is a real added-value for your clients and salon. Electric white ceramic bowl, vertical adjustment through back-tilt navigator, concave bowl for best position of the back, black rotomoulding, fully recyclable, oblique shape, electric to prevent musculo-skeletal disorders. Electric legrest to enhance the client's comfort.
66 x 119 x 92 cm



TAL

Styling chair especially adapted to large salon spaces. Marked curves from backrest to armrests injected foam seat and backrest, simple topstitching, matching tones or contrast stitching. Removable cover by upholsterer. Selection of fabrics from the upholstery range in CINDARELLA catalogue
65 x 64 x 84 cm



EXTENSO

Styling chair. Beech plywood seat and backrest clad in Bultex foam. Simple topstitching, matching shades or contrast stitching. Removable cover by upholsterer. Chrome-plated cast aluminum armrests. Selection of fabrics from the upholstery range in CINDARELLA catalogue.
56 x 68 x 91 cm



CUBIC

Styling chair with curved backrest, comfortable seat with contemporary design. Space between seat/backrest/armrests for easy loose hair disposal. Beech plywood seat and armrests clad with Bultexfoam. Simple topstitching, matching shades or contrast stitching, removable cover by upholsterer. Selection of fabrics from the upholstery range in CINDARELLA catalogue.
65 x 59 x 87 cm

MEN CORNER

HEROS BARBER

Beech plywood structure clad in Bultex foam. Simple topstitching, matching shades stitching. Removable cover by upholsterer. Manually reclinable and adjustable backrest. Chrome-plated armrests with covered armpads. Adjustable footrest. Manually adjustable headrest. Selection of fabrics from the upholstery range in CINDARELLA catalogue.

68 x 111/160 x 104 cm



GENTLEMAN

Reclinable chair, structured design of the comfortable Cubic chair. Simple topstitching, matching shades stitching. Removable cover by upholsterer. Manually reclinable and adjustable backrest. Covered armrests. Selection of fabrics from the upholstery range in CINDARELLA catalogue.

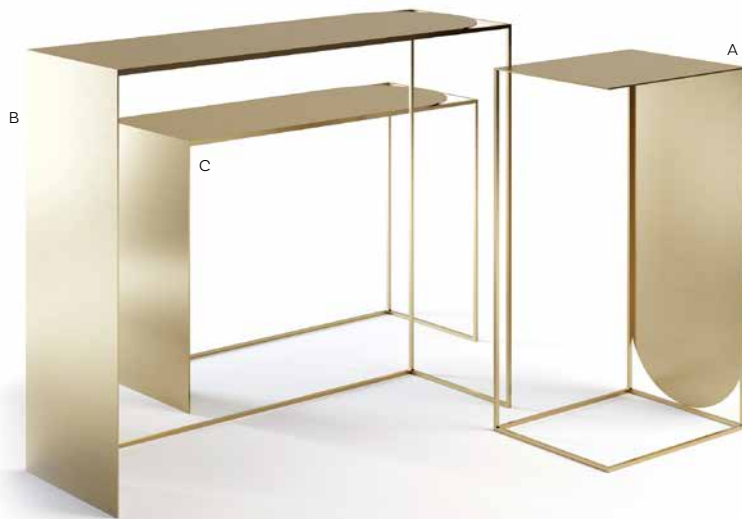
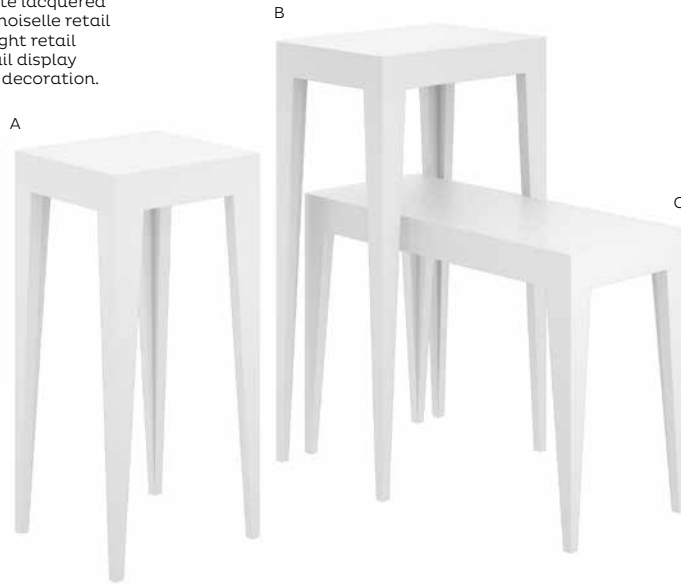
78 x 103/121 x 104 cm

RETAIL

MADMOISELLE

Retail display tables made of black or white lacquered wood, design by Nathalie HACKER. Mademoiselle retail display tables have been created to highlight retail products harmoniously. Three sizes of retail display tables to outline and embellish your salon decoration.

A 30 x 30 x 67 cm
B 43 x 30 x 80 cm
C 69 x 30 x 90 cm



WATSON

Display tables for hair care products, design by Julie GAILLARD, originality of the outstanding metal lines matching with the whole WATSON collection. Seamlessly integrating in any space of the salon, window, next to reception desk, in the center of the salon, against a wall etc...The place will depend on the setting you want to create.

Colors of steel structure epoxy black/White/gold/powdery pink.

Stands to be laid directly on the floor.

A display stand can withstand a weight between: 2 and 10

A 91 x 40 x 50 cm
B 101 x 40 x 70 cm
C 121 x 40 x 100 cm

BEST OF PALLADIUM



H2O

Exceptional styling chair, foam structure, Murano glass sphere available in black. Selection of fabrics from the PALLADIUM upholstery range.

65 x 61 x 80 cm



GRAVITY

Futuristic and slender sphere, foam structure. Selection of fabrics from the PALLADIUM upholstery range.

62 x 69 x 82 cm



MAYA

Polyethylene structure available in back, white or cappuccino. Innovative system in white PS with adjustable manual headrest, for exceptional comfort.

Options: Aquastop, Vacuum breaker and removable legrest.

76 x 135 - 185 x 95 cm / Legrest : 52 x 76 x 51 cm



FLY

Polyethylene structure available in back, white or cappuccino. Innovative system in white PS with adjustable manual headrest, for exceptional comfort.

Options: Aquastop, Vacuum breaker and removable legrest.

75 x 135 x 90 cm / Legrest : 51 x 66 x 51 cm





In partnership with

Cindarella
PARIS

2018

Moers, Germany

Gharieni Group GmbH
Gutenbergstr
40 D-47443 Moers

Tel: +49 (0) 28 41 - 88 300 - 300
info@gharieni.com
www.gharieni.de

Belfort, France

Gharieni France SARL
6, Rue de L'étang
F-90000 Belfort

Tel: +33 (0) 3 39 03 39 47
info@gharieni.fr
www.gharieni.fr

Dubai, UAE

Gharieni Middle East FZ-LLC
Dubai Design District D3
Building 1, Office B208

Tel: +971 (0) 4 2 76 67 34
info@gharieni.ae
www.gharieni.ae

Aventura, USA

Gharieni USA Inc., Turnberry Isle
19999 West Country Club Drive
Aventura, Florida 33180

Tel: +1 (855) 378 4772
info@gharieni.com
www.gharieni.com

Nederweert, BeNeLux

Gharieni Nederland BV
Hulsenweg 14
NL-6031 SP Nederweert

Tel: +31 (0) 495 - 63 30 36
info@gharieni.nl
www.gharieni.nl